

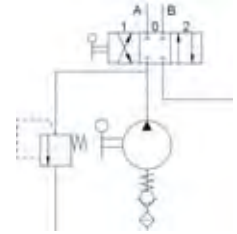
HAND PUMPS FOR SINGLE & DOUBLE ACTING CYLINDERS

FUNCTION: 4 WAY 3 POSITION CLOSED CENTRE VALVE WITH RELIEF VALVE

FEATURES

- Manufactured in Europe
- Cast iron body
- Piston treated with Niploy
- White zinc plated support lever
- Lever connection $\varnothing 27$
- Standard colour black
- Oil tank mounting kit included
- Pump provides flow from both up and down stroke

Hand Pump requires tank and handle, refer to page 52

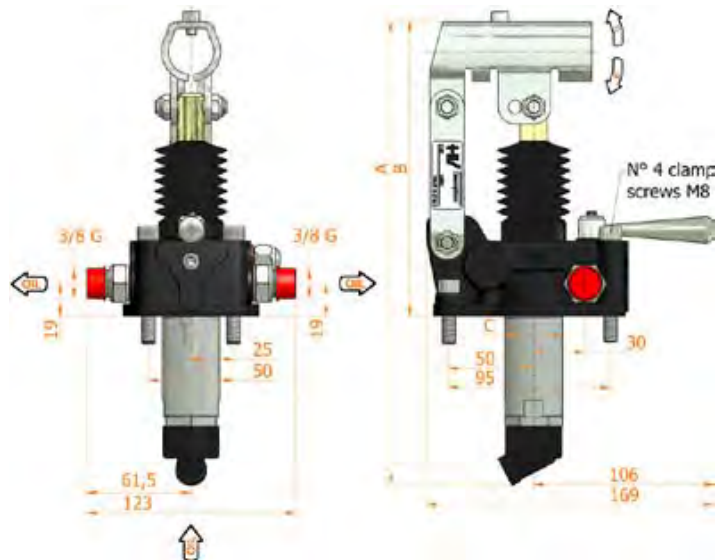
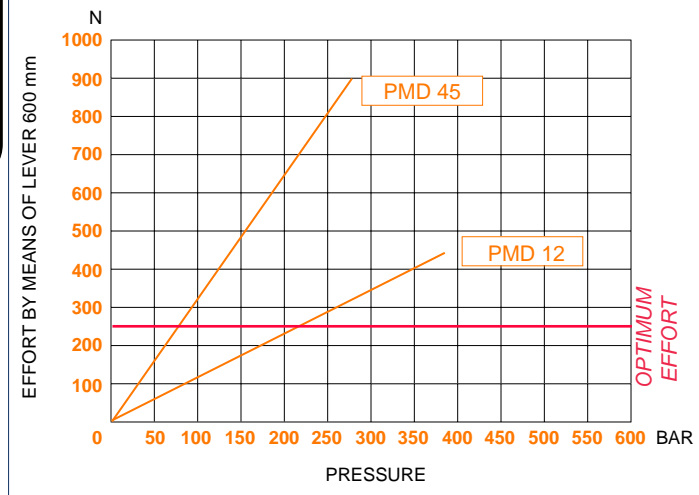


SPECIFICATIONS

Model	Displacement (cc)	A (mm)	B (mm)	C (mm)	D °	E °	Pressure (Bar)		Weight (kg)
							Working	Max	
PMD12-BYB-S	12.095	253	166	34	26	31	320	380	3.4
PMD45-BYB-S	44.532	283	166	40	45	33	80	280	3.5

EFFORT DIAGRAM

pin in D (distance between centers: 40 mm) PMD 6 - PMD 12
pin in E (distance between centers: 51 mm) PMD 25 - PMD 45



*Displacement requires 1 pump cycle. ie) 1 stroke up and 1 stroke down